
2. Exploded View and its Parts List

2-1 Main Exploded View

2-2 Main Parts List

2-3 Test Zig

2-4 RF Cabel

2-5 Test Connection Method

2-6 Travel Adaptor

2-7 Travel Adaptor parts List

2-8 Ciger Light Adaptor

2-9 Ciger Light Adaptor Part List

2-10 Hands Free Kit Diagram

2-11 Hands Free Kit

2-11-1 Hands Free Kit Ass'y

2-12 Hands Free Car Kit Option

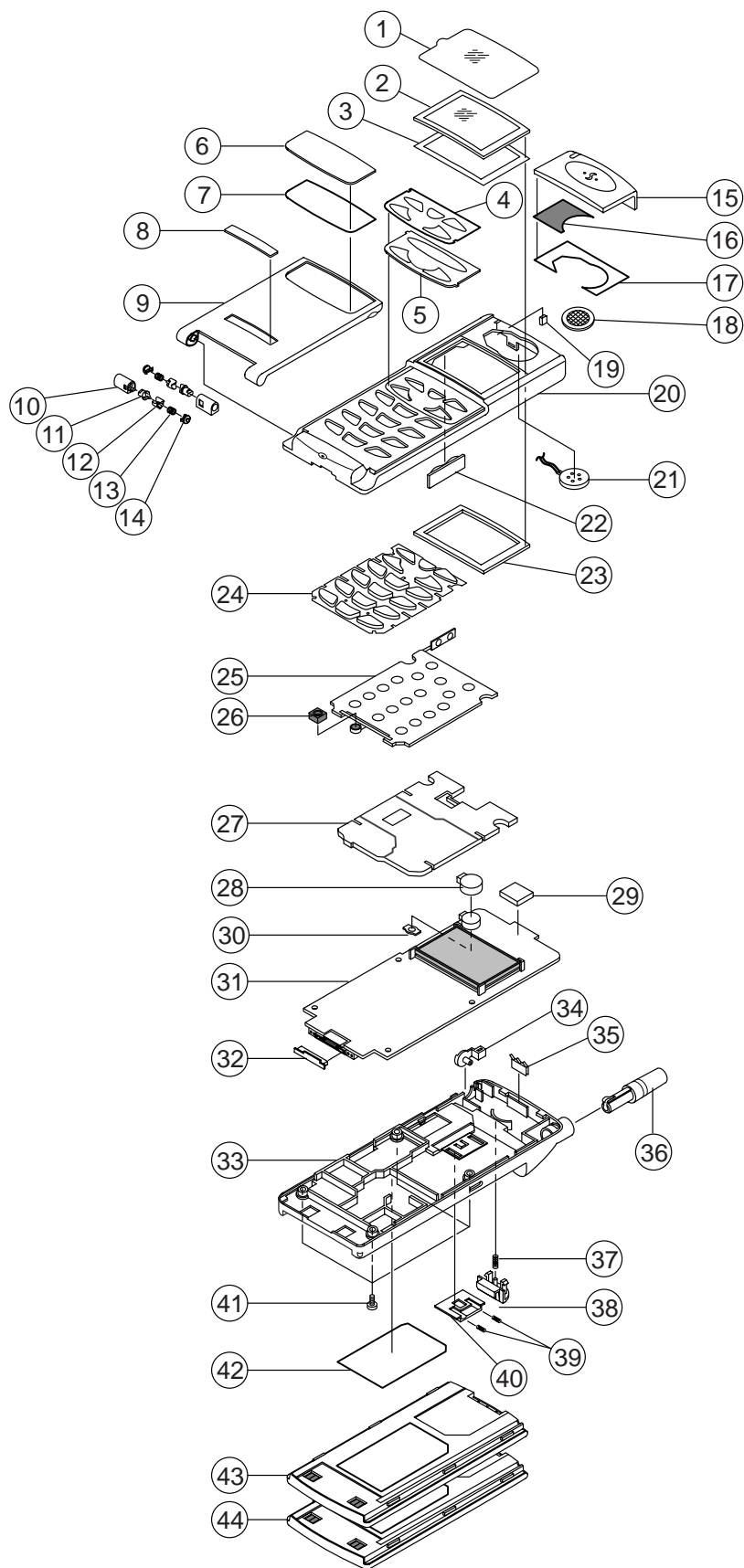
2-12-1 Hands Free Car Kit Ass'y

2-13 Hands Free Kit Packing

2-13-1 Hands Free Kit Packing Exploded View

2-13-2 Hands Free Kit Packing Parts List

2-1 Main Exploded View

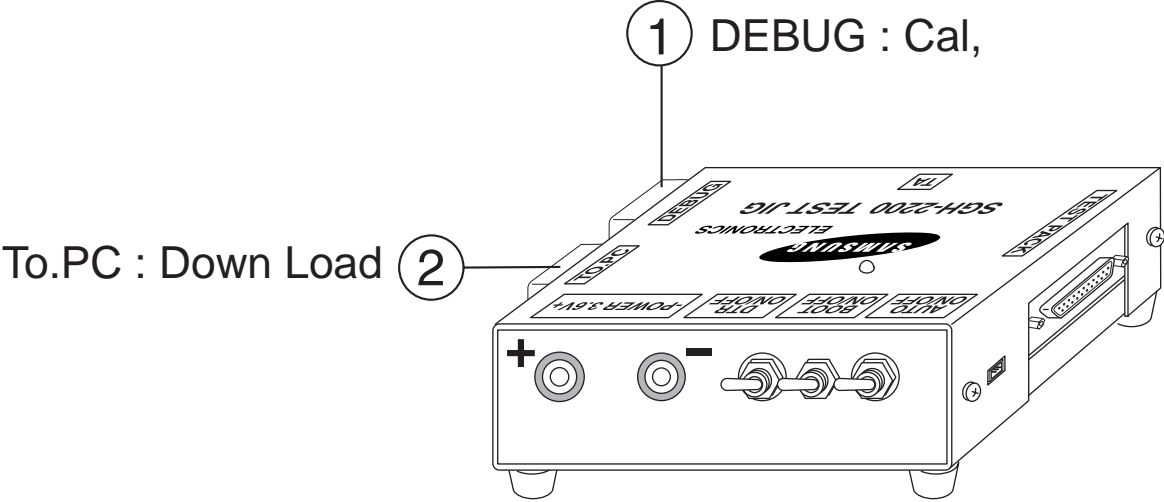


2-2 Main Parts List

NO	DESCRIPTION	SEC. CODE	Q'TY	REMARK
1	TAPE WINDOW BOHO	GH72-10001A	1	W
2	LCD WINDOW	GH72-00093A	1	W
3	WINDOW TAPE	GH74-00039A	1	W
4	DUMMY KEY	GH72-00108A	1	F
5	DUMMY KEY TAPE	GH74-00053A	1	F
6	DUMMY FLIP	GH72-00094A	1	FLIP
7	DUMMY FLIP TAPE	GH74-00038A	1	FLIP
8	LOGO BADGE	GH68-20008A	1	
9	FLIP COVER	GH68-20008A	1	FLIP
10	HINGE HOUSING	GH72-41293A	2	F
11	SHAFT HINGE	GH72-41554A	2	F
12	CAM HINGE	GH72-41055A	2	F
13	HINGE SPRING	GH70-10608A	2	F
14	HOUSING CAP	GH72-41056A	2	F
15	DUMMY FRONT	GH72-00084A	1	F
16	DUMMY MANFSA	GH74-00204A	1	F
17	DUMMY TAPE	GH74-00040A	1	F
18	SPEAKER MANGSA	GH74-00208A	1	
19	LED LENS	GH72-00082A	1	F
20	FRONT COVER	GH72-00083A	1	F
21	SPEAKER	GH39-00030A		1
22	VOLUME KEY	GH73-00025A	1	
23	LCD SPONGE	GH74-00041A	1	F
24	3X4 KEY	GH72-00095A	1	
25	KEY PCB	GH59-00041A	1	
26	MIC HOLDER	GH73-00026A	1	
27	SHIELD CAN	GH72-00089A	1	
28	BUZZER HOLDER	GH73-00024A	1	
29	SPONGE SPEAKER	GH74-00142A	1	
30	JACK-COVER	GH73-00116A	1	
31	MAIN PBA	GH92-00742A	1	
32	CONNECTOR COVER	GH73-40639A	1	
33	REAR COVER	GH72-00086A	1	R
34	EARPHONE COVER	GH73-00027A	1	
35	STRIP FINGER	GH71-10639A	1	R
36	ANTENA	GH42-00006A	1	
37	LOCKER SPRING	GH70-10516A	1	R
38	MAIN LOCKER	GH72-00087A	1	R
39	SIM SPRING	GH70-00006A	2	R
40	SIM COVER	GH72-00088A	1	R
41	SCREW M2X6	6001-001046A	4	
42	MAIN LABEL	GH68-00333A	1	
43	STD BATTERY (BTL1030MB)	GH43-10314A	1	
44	LONG BATTERY (BTL163DLB)	GH43-00089A	1	

W	WINDOW ASS'Y	GH97-00929A		
F	FRONT ASS'Y	GH97-00938A		
FLI	FLIP ASS'Y	GH97-00944A		
R	REAR ASS'Y	GH97-00935A		

2-3 Test Jig

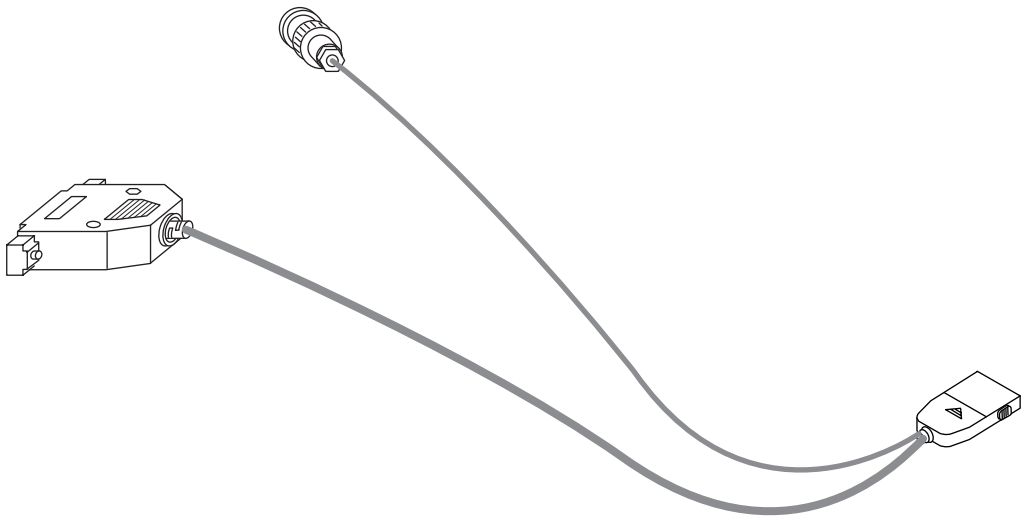


JIG

* Switch

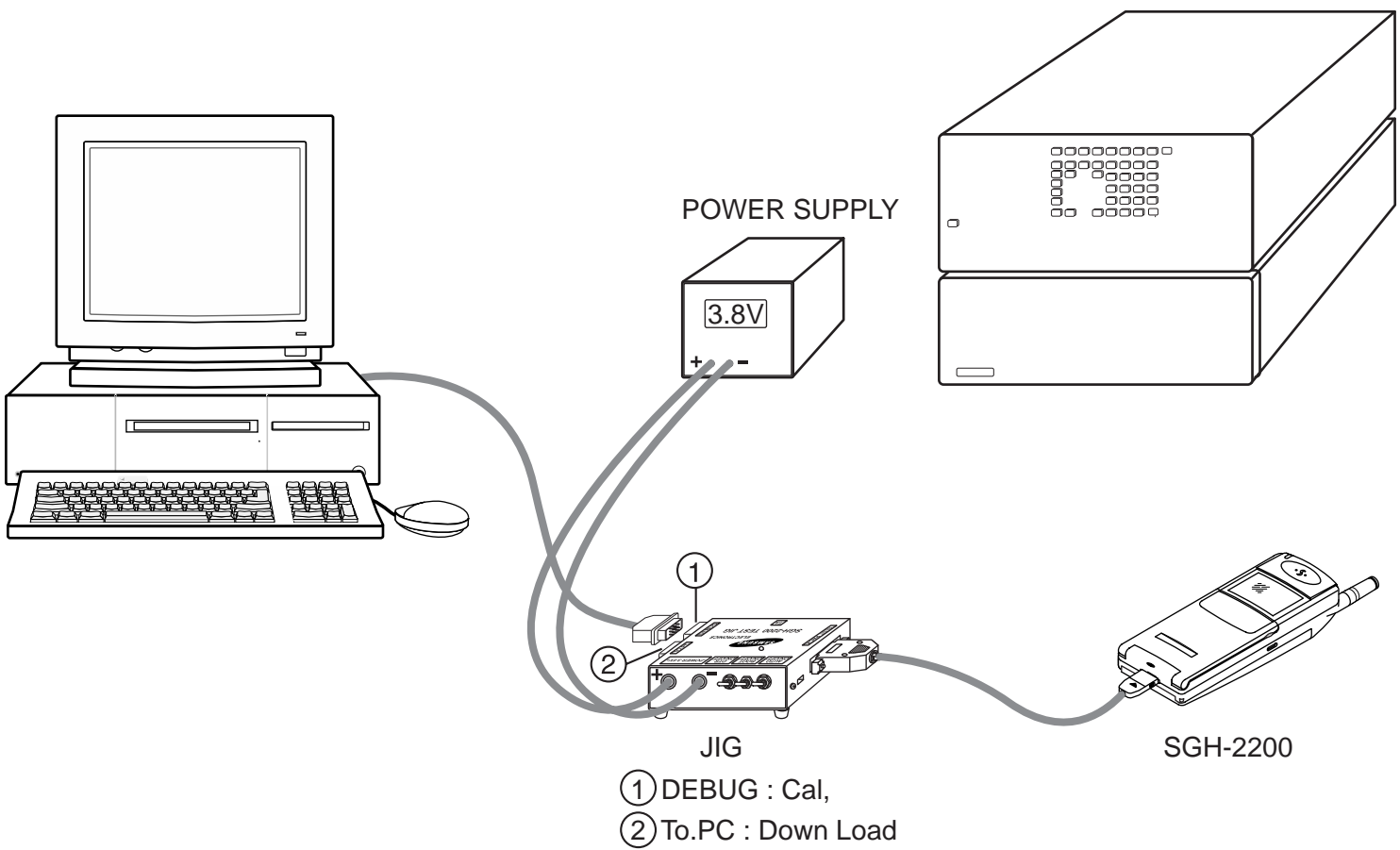
	DTR ON/OFF	BOOT ON/OFF	AUTO ON/OFF
Cal.	up	down	up
Down Load	up	up	up

2-4 RF Cabel

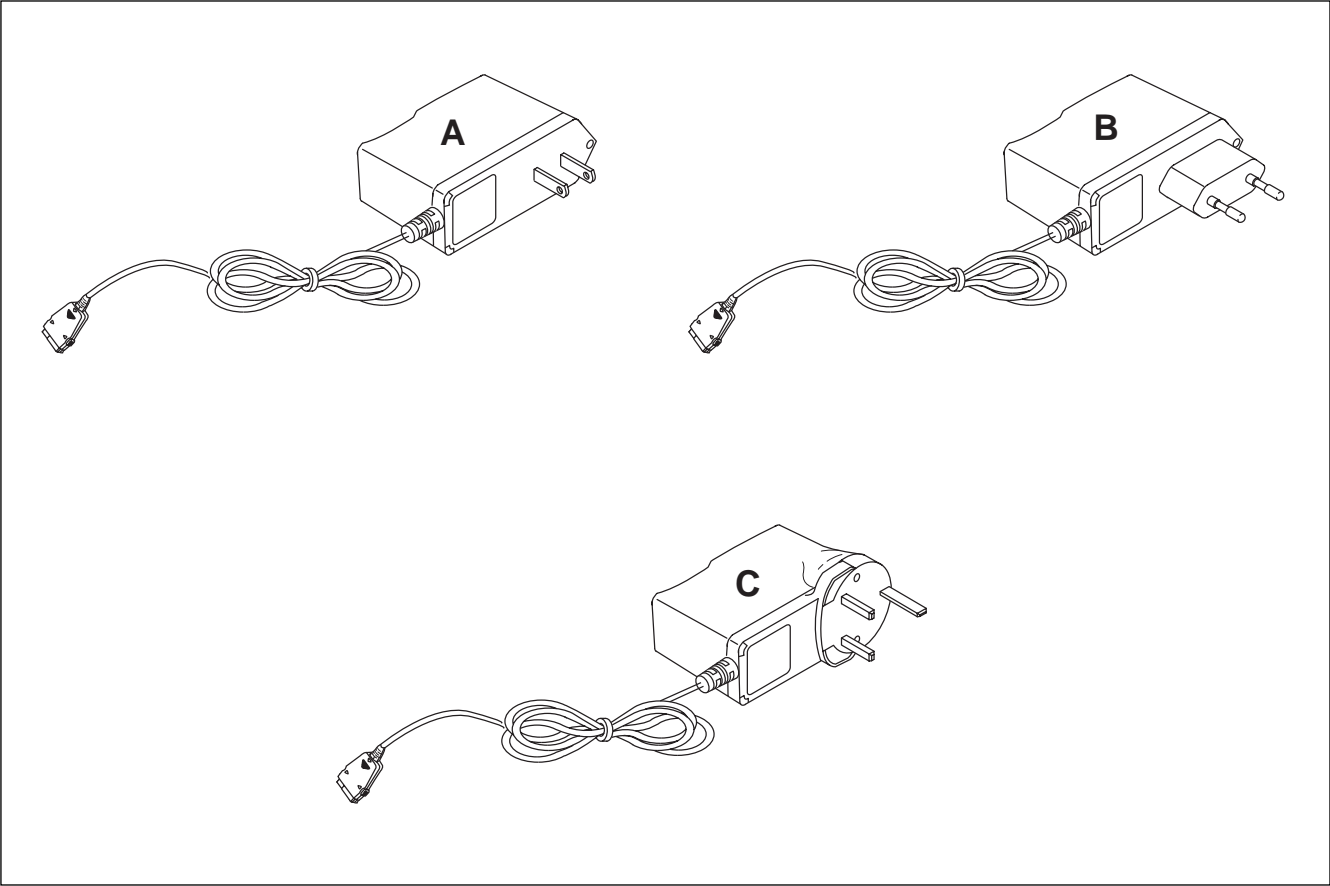


RF CABLE

2-5 Test Connection Method



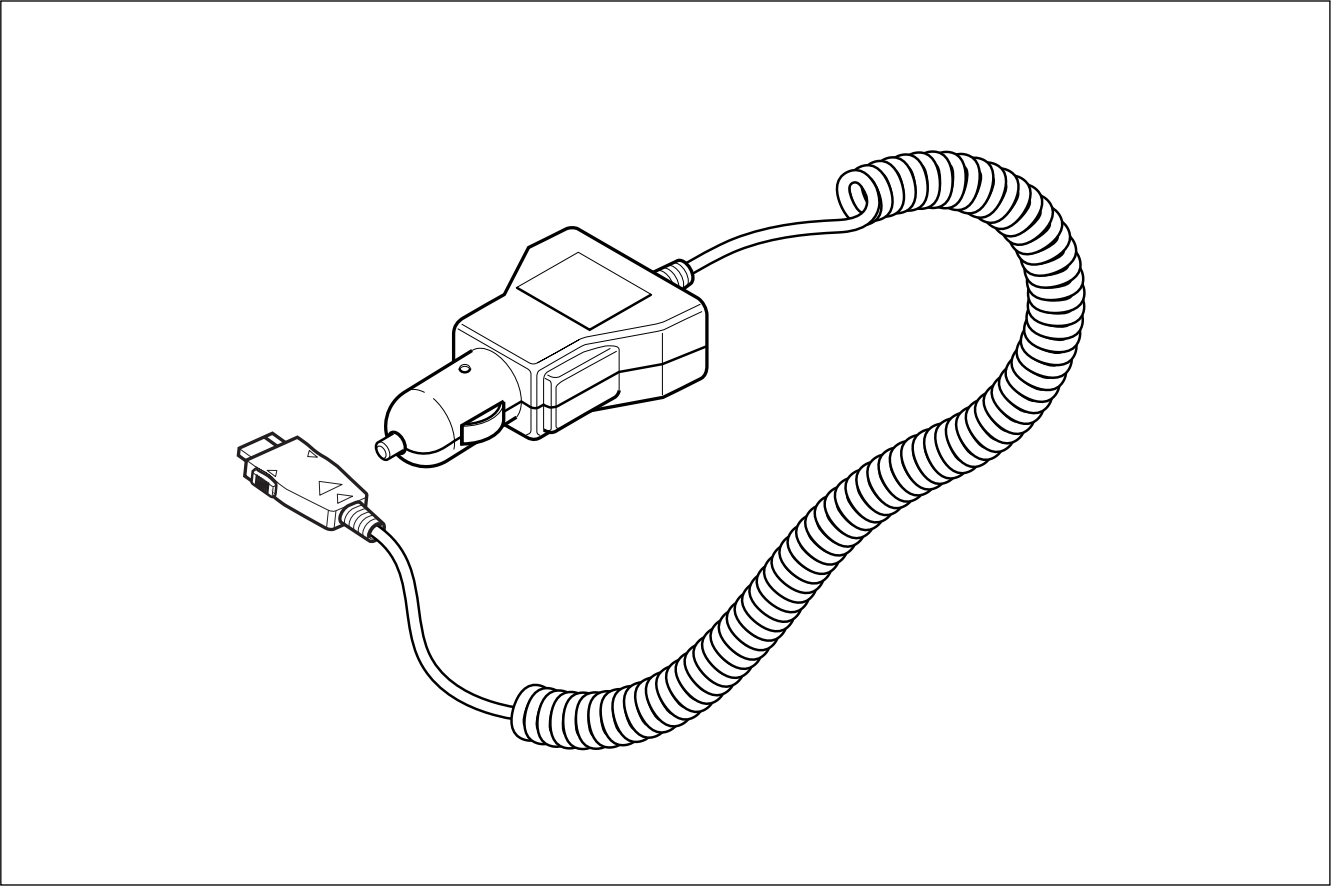
2-6 Travel Adaptor



2-7 Travel Adaptor Parts List

Type	SEC Code	Remark
A	GH44-30548A	CHINA
B	GH44-30549A	EUROPE
C	GH44-30547A	UNITED KINGDOM

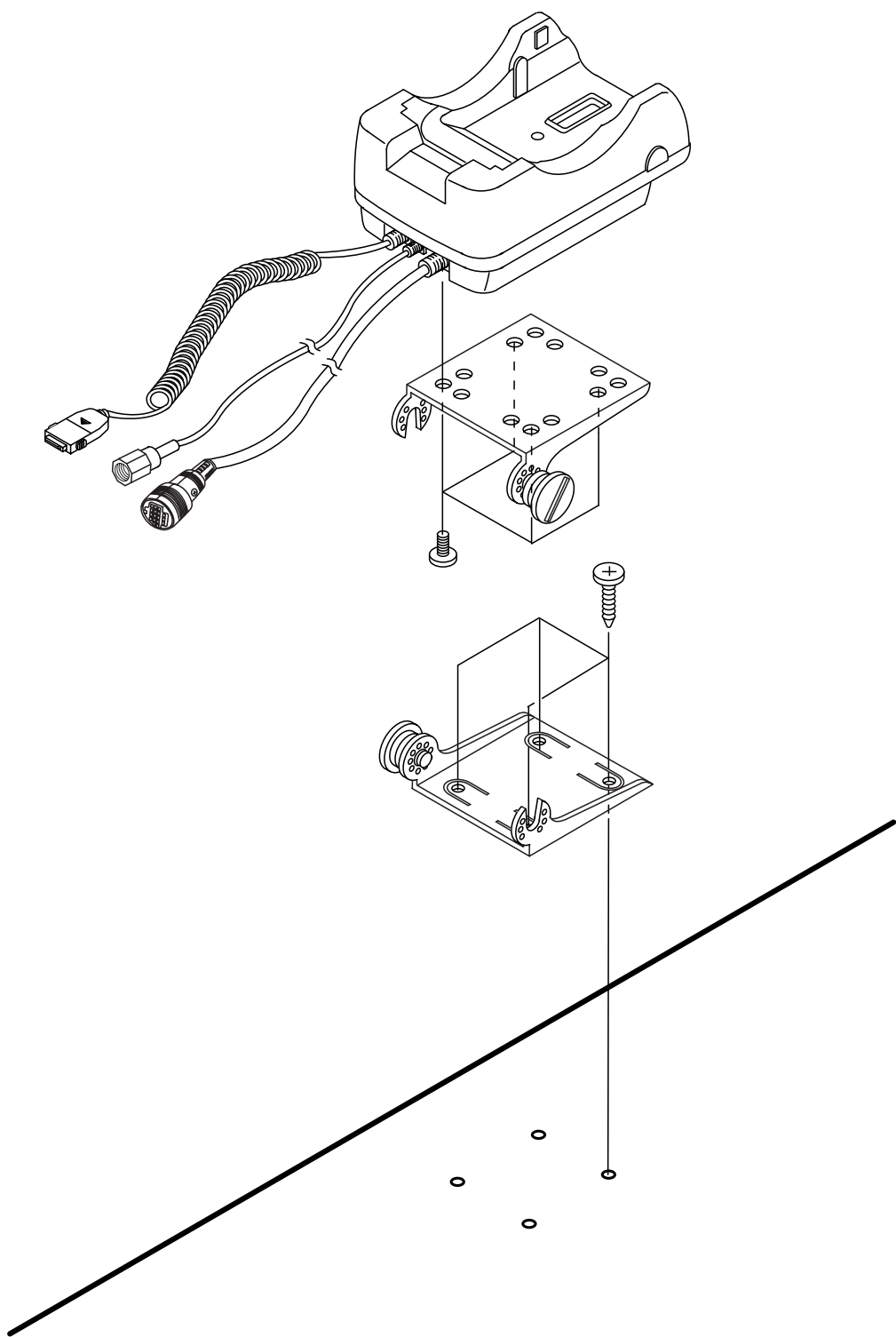
2-8 Ciger Light Adaptor



2-9 Ciger Light Adaptor Part List

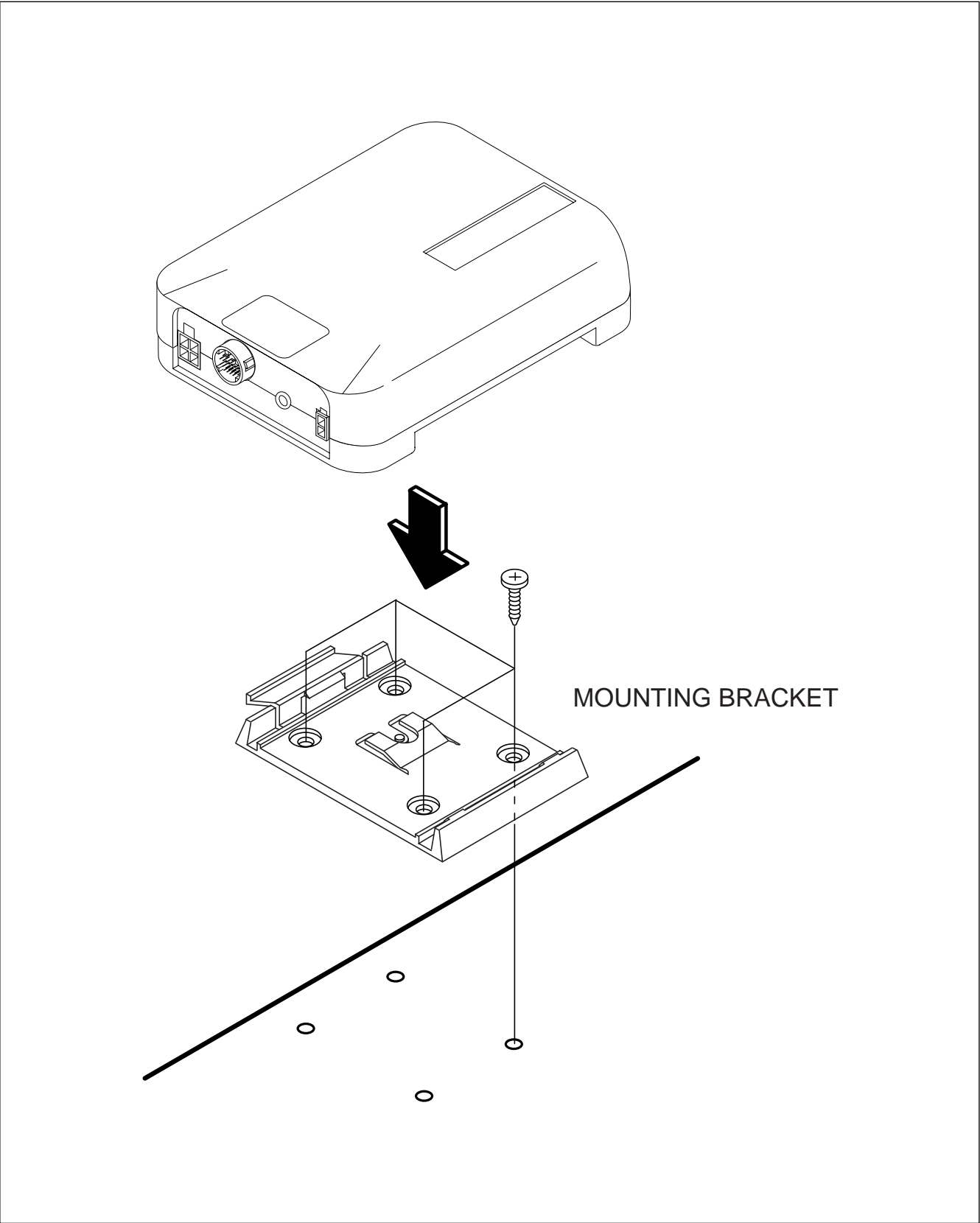
Description	SEC Code	Remark
Ciger Light Adaptor C0de	GH44-30546A	BLACK

2-10 Hands Free Kit Diagram



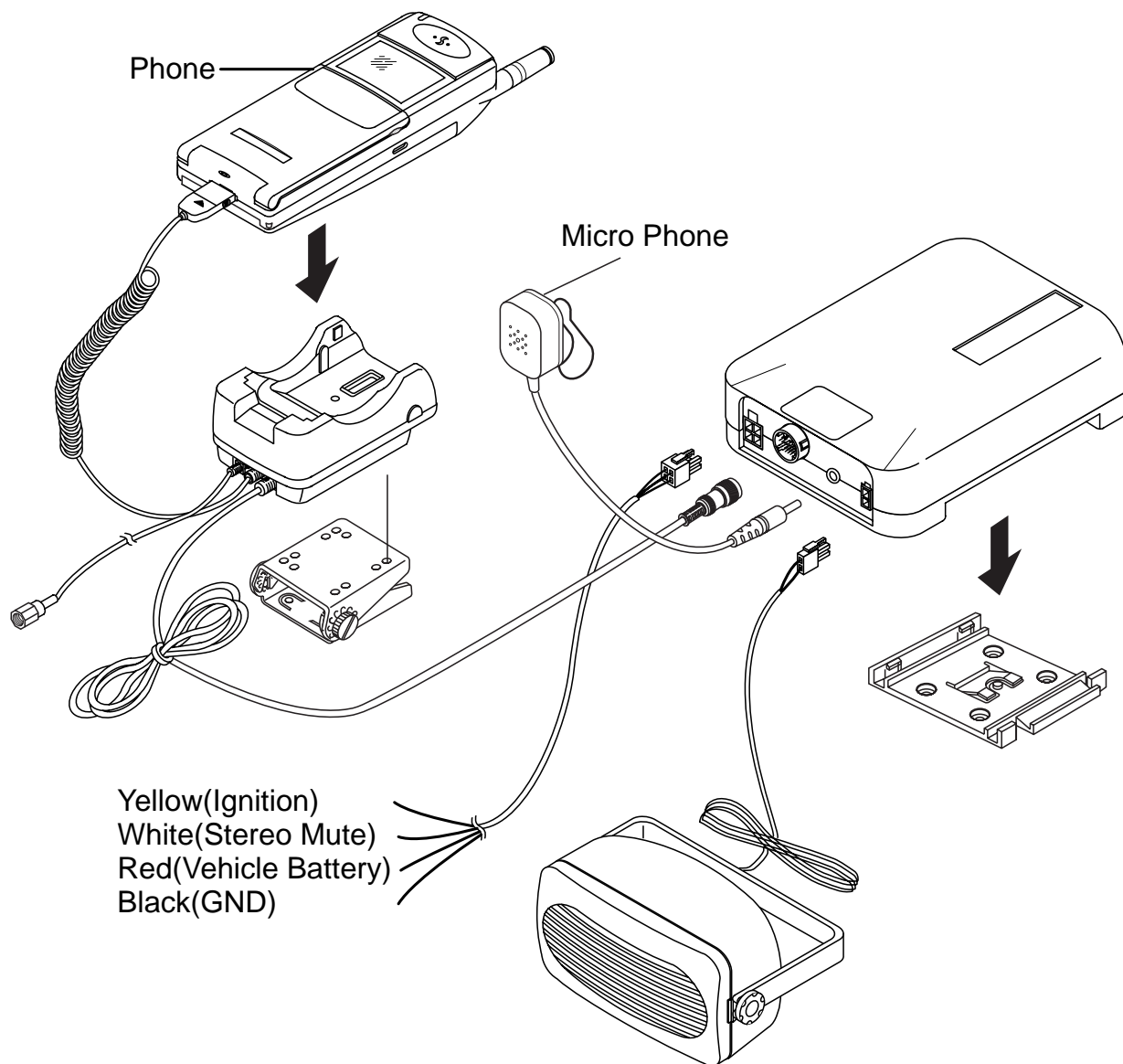
2-11 Hands Free Kit

2-11-1 Hands Free Kit Ass'y



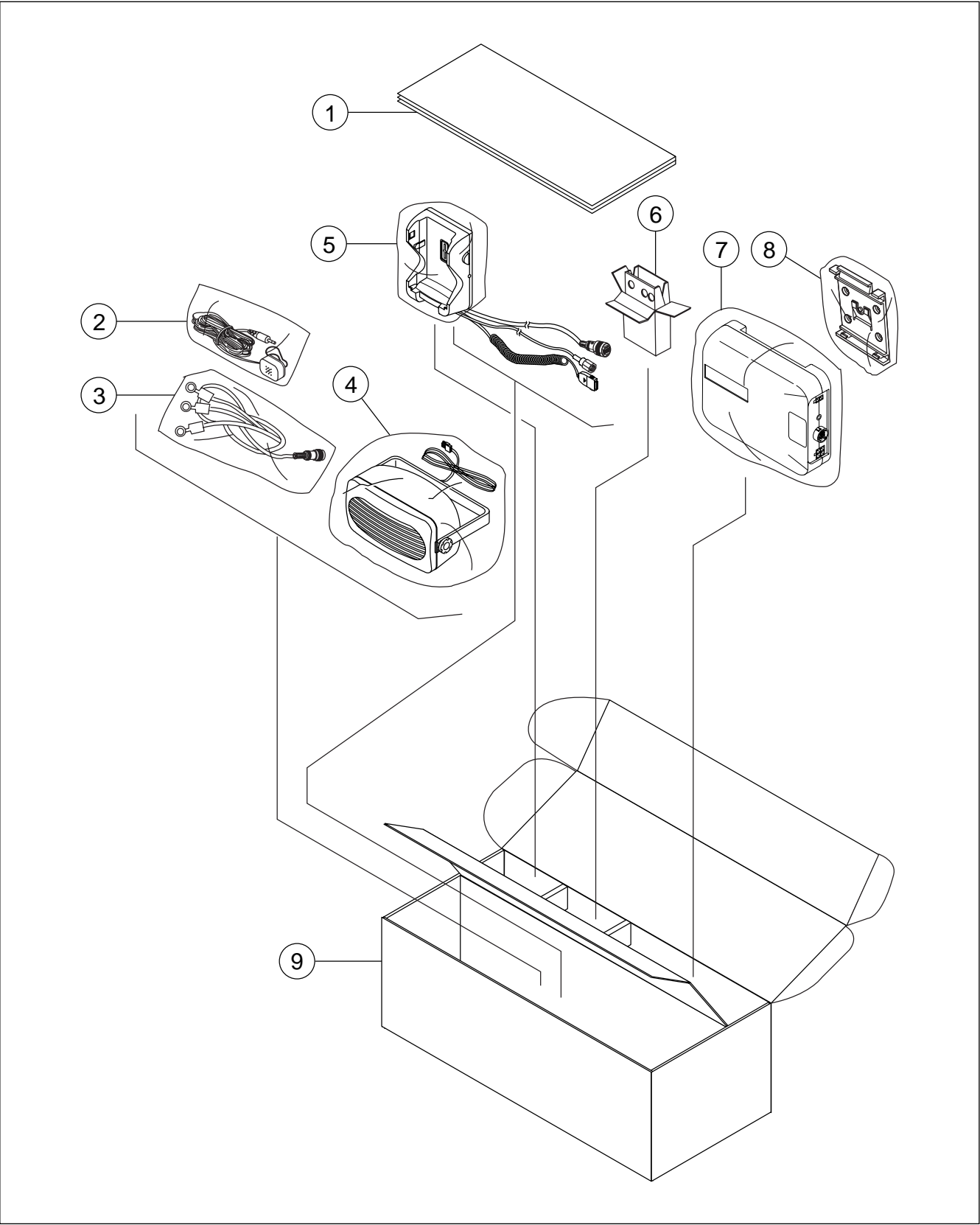
2-12 Hands Free Car Kit Option

2-12-1 Hands Free Car Kit Ass'y



2-13 Hands Free Kit Packing

2-13-1 Hands Free Kit Packing Exploded View



2-13-2 Hands Free Kit Packing Parts List

No	DESCRIPTION	CODE	Q'TY	REMARK
1	User Manual		1	
2	External Mic		1	
3	Power cable		1	
4	External speaker		1	
5	Cradle		1	
6	Install Bracket for cradle		1	
7	Hands free Box		1	
8	Install Bracket for hands-free box		1	
9	Unit Box		1	